



LogTag® LTI-WM-WiFi

Quickstart Guide

Version A

www.logtagrecorders.com

Quickstart Guide Contents

What's Included	3
Downloading the Connection Wizard	4
Running the Connection Wizard	5
Connecting to your WiFi Network	6
LogTag Online	9
Registering a new device	10
Creating a Location	11
Physical Installation	12
Uploading Results to LogTag Online	13
Viewing Results	14

What's Included

Please check you have each of the items shown below before continuing with setting up your LTI-WM-WiFi.



LTI-WM-WiFi



USB Cable



x1 Adhesive strip



USB wall charger
(US customers only)

Note: The LTI-WM-WiFi is only compatible with some loggers. Please refer to LogTag website for the latest compatibility models.

Downloading the Connection Wizard

Firstly, connect your LTI-WM-WiFi to your computer via the USB cable provided. The USB socket on the device is located at the bottom of the interface cradle.



Your LTI-WM-WiFi requires you to connect it to your WiFi Network. To do that, we have an easy tool for you to use called the LogTag Online Connection Wizard.

To download the LogTag Online Connection Wizard, please open your browser and type the link below to begin the download:

 <https://logtagrecorders.com/download/connectionwizard.exe>

If you have issues with the link above, you can download the .zip version instead and ensure you unzip the file before running it via the link below:

 <https://logtagrecorders.com/download/connectionwizard.zip>

Warning: Please ensure no other LogTag software is currently running on your computer before running the Wizard software.

Running the Connection Wizard

Please ensure there is an internet connection on your computer prior to starting this process.

This software doesn't require any setup or installation. Simply double-click the connectionwizard.exe file that you downloaded. The first page of the Wizard will be displayed.

When you're ready to begin, click **"Start"**.



Easy Setup will be selected by default. Keep this option checked and click **"Next"**.

You will be asked to sign in to your LogTag Online account. If you do not have an account, click the link below or alternatively, open your browser, type the following link into the address bar and follow the on-screen instructions.

<https://logtagonline.com/signup>

or click **Create a LogTag Online Account** link.

You have now created your account and is now ready to set up connection of your LTI-WM-WiFi to the WiFi network.

Connecting to your WiFi Network

Type your LogTag Online account details and click “**Sign In**”, followed by “**Next**”.



The Wizard will now scan for any connected LogTag devices.

If the scan doesn't find any devices, double-check the device is plugged in to your computer with the USB cable provided and click “Scan Again”.

Scanning...		
Serial:	Configured WiFi:	Status:
A0B500100705	LogTag24	Registering

As soon as a device has been identified, it will appear in the table (left) and automatically register that device to your LogTag Online account.

Serial:	Configured WiFi:	Status:
A0B500100705	LogTag24	Registered

The Status will turn green with the text “Registered” once complete.

Click the “**Next**” button once you are ready.



1. Click the Network Name and your WiFi device will begin searching for nearby Wireless Networks.
Note: This process can take up to 2 minutes, please wait whilst the network scan is in progress.
2. Once you have selected your WiFi Network from the list, type the password for the network. **Remember that passwords are case-sensitive.**
3. (Optional) Once you have typed your password, you can click the eye icon to reveal the password. Incorrectly typed passwords is one of the most frequent reasons why device setup fails.
4. Once you have selected your WiFi Network and typed the password, click **“Next”**.

Note: Some WiFi Networks won't appear in this list for security purposes. If you are aware that your network is one of these, you can manually type the name of your network (SSID) in the Network Name field instead of clicking the menu arrow.



The device is now being configured with the WiFi details you provided in the previous screen, which typically takes 10 seconds.

The Connection Wizard is now checking that the LTI-WM-WiFi can connect to your WiFi network and to LogTag Online.

A0B500100705 ✓ Connection Succeeded

1. Once the Wizard displays “Connection Succeeded”, click “**Next**” to complete the Wizard.
2. Click “**Close**” to close the Wizard or click the ‘LogTag Online Sign In page’ link to take you to LogTag Online website.

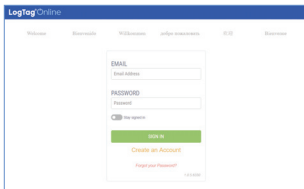
Note: The blue network LED flashes on LTI-WM-WiFi once connection is successful. If the red network LED is flashing, please refer to the product user guide for troubleshooting.

LogTag Online

LogTag Online is a secure online service that stores the data recorded from your logger against your account.

Signing in to your LogTag Online Account

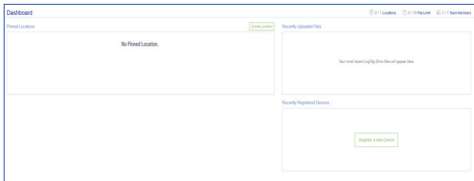
Open your browser and navigate to: <https://logtagonline.com>



The screenshot shows the LogTag Online sign-in interface. At the top, there is a navigation menu with links for 'Welcome', 'Dashboard', 'My Devices', 'My Loggers', 'My Settings', and 'Logout'. The main content area contains a sign-in form with the following elements:

- EMAIL:** A text input field labeled 'Email Address'.
- PASSWORD:** A text input field labeled 'Password'.
- A checkbox labeled 'Use captcha'.
- A prominent green button labeled 'SIGN IN'.
- Below the button, there are two links: 'Create an Account' (in orange) and 'Forgot your Password?' (in red).
- A small version number 'v1.0.0.000' is visible at the bottom right of the form.

1. Type your Email and Password
2. Then click "Sign In".
3. Upon signing in, you will see the Dashboard.



The screenshot shows the LogTag Online Dashboard. At the top right, there are three utility icons: a location pin, a refresh icon, and a user profile icon. The dashboard is divided into three main sections:

- Pinnet Locations:** A large empty box with the text 'No Pinnet Location.' and a 'Create Location' button in the top right corner.
- Recently Updated Data:** A box containing the text 'You must select LogTag Data File of your file.'.
- Recently Registered Devices:** A box containing a 'Register a new Device' button.

Registering a new device

After you have docked a logger into LTI-WM-WiFi, it will automatically register the logger in LogTag Online and show in the [Recently Registered Devices](#) section on the dashboard in LogTag Online.

Recently Registered Devices (View all)				Register Device
Model	Device Name	Serial Number	Last Connection	
TRE000-16R		S/N:6061000944	09:11 AM - 04/29/2019	

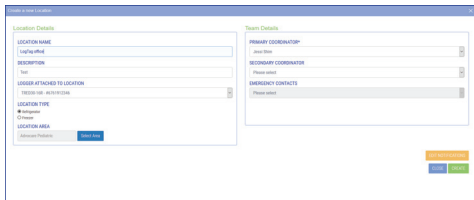
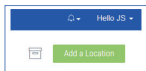
• END OF PAGE

Creating a Location

This process is easier if your logger is registered prior to creating a location.

In order to use the real-time data feature of the LTI-WM-WiFi, you will need to create a Location after registering your device.

To create a Location, click the green “Add a Location” button from the Locations page.

A screenshot of a web form titled 'Create a new Location'. The form is divided into two main sections: 'Location Details' on the left and 'Team Details' on the right. The 'Location Details' section includes fields for 'LOCATION NAME' (with 'LogTag office' entered), 'DESCRIPTION' (with 'test' entered), 'LOGGER ATTACHED TO LOCATION' (with a dropdown menu showing 'TR2000 100 - 86718102348'), and 'LOCATION TYPE' (with radio buttons for 'Independant' and 'Person', and 'Independant' selected). Below these is a 'LOCATION AREA' section with a link to 'Advanced Options' and a blue 'Save Area' button. The 'Team Details' section includes dropdown menus for 'PRIMARY COORDINATOR' (with 'Jesse Stein' selected), 'SECONDARY COORDINATOR' (with 'Please select' selected), and 'EMERGENCY CONTACTS' (with 'Please select' selected). At the bottom right of the form, there are three buttons: a blue 'Cancel' button, a green 'Save' button, and an orange 'Get Real-time Data' button.

For more information on completing the fields, or to edit/delete Location please refer to the LogTag Online user guide.

Tip: You can pin/unpin a Location to your dashboard by clicking the small “plus/minus” icon in the top right corner to show real-time data from the logger in LogTag Online.



Physical Installation

Setup of your LTI-WM-WiFi is complete, to install the LTI-WM-WiFi:

1. Un-clip the interface from the mount base.
2. Mount base with adhesive strip or screws on a flat surface at your preferred site.
3. Clip back the interface onto the mount base
4. Plug in USB power cable



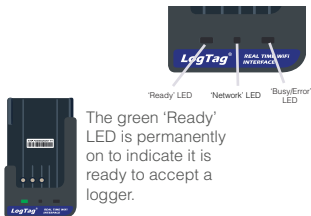
Note: Ensure the mounting surface is clean and dry before installing.



Make sure the USB cable from the LTI-WM-WiFi can reach the USB wall charger comfortably without obstruction.

Uploading Results to LogTag Online

Please ensure your logger has started prior to docking it into the interface.



The green 'Ready' LED is permanently on to indicate it is ready to accept a logger.

To upload your logger's data to LogTag Online, simply dock it into the LTI-WM-WiFi.



The blue 'Network' LED rapidly flashes to indicate it is in the process of uploading data to LogTag Online cloud.

The red 'Busy/Error' LED is permanently on while the data is being downloaded from the logger.



When the upload of data from the logger is complete, amber and blue lights flash at the same time to indicate real-time temperature upload is active.

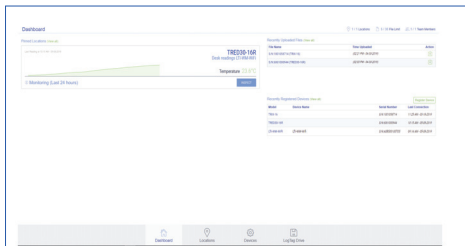


Viewing Results

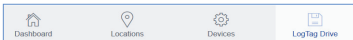
To view your data, sign in to your LogTag Online account.

For any pinned location you can see a snapshot of the data collected. To view the data in more detail, click on the miniature chart or click “Inspect”.

For any locations that are not pinned to the dashboard, click “Locations” and select the location you wish to see in more detail.



If the logger is not attached to a location, browse to LogTag Drive at the bottom of the dashboard to view data online along with options to share, edit and delete the data on your account.



**For more information or support, please
contact your LogTag Distributor.**